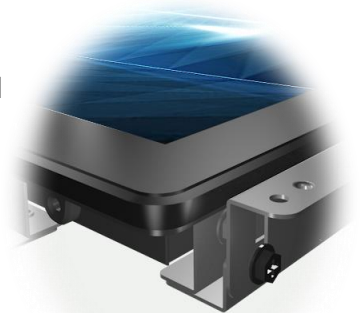


## Overview

The TRE series embedded open frame touch monitors with multi-point (10 points) projected capacitive (PCAP) touch screen deliver an industrial-grade & reliable solution with wide-angle viewing, outstanding image clarity & accurate touch response that is cost-effective for OEMs and systems integrators. Embedded eye-catching & rugged bezel with edge-to-edge glass and ultra-thin & ultra-narrow edge structure design with patent delivers flat design self-service terminals with high durability and scratch & water resistance. Landscape, portrait and face-up orientation ensures flexible mounting possibilities in almost any installation. Our TR series product line is available in a wide range of sizes, offering the versatility needed for commercial kiosk applications from self-service and gaming to industrial automation, digital signage & healthcare.



## Features

### Embedded Design

Edge-to-edge glass design ensures seamless and flat integration

### Easy to Use

Plug & play, flexible video input interface

### Full HD

1920 x 1080 resolution

### Reliable and Professional Design

Elegant design with metal structure & plastic front bezel delivers outstanding image clarity

### Touch Through Enabled with PCAP

Accurate 10 points touch responses support touch through a front layer of glass with thickness's up to 5mm.

### Multi-touch

Support Windows multi-touch protocol

### Supported OS

Windows 7 /10, Android , Linux, Mac OS X

### Flexible Mounting

Different mounting holes & external brackets making flexible mounting possibilities in almost any installation

## Specifications

### ■ Display

LED Panel	IPS, 23.8 inch
Backlight	E-LED (edge-lit)
Viewable Area	527 (H) x296.5 (V)
Brightness	250 cd/m2
Contrast Ratio	1000:1
Viewing Angle	178° H/V
Response Time	14ms (GTG)
Number of Colors	16.7M
Native Resolution	1920x1080 (16:9), FHD
Video Frequency	60Hz
Video Interface	VGA x1 / HDMI x1
Input Resolution	1920 x 1080 @ 60Hz

### ■ Touch

Touch Points	10 (HID, only with supported OS)
Touch Technology	Projective Capacitive (PCAP)
Touch Method	Finger, glove (latex) Active & passive stylus pen
Glass Overlay	tempered glass Optional AG / AR surface finish
Water Resistance	Support touch in water fog and light rain Little drops of water will not cause drift
Calibration	No need calibration tools
Response Time	16ms
Report Rate	>100Hz
Touch Interface	USB (Type B) x1
Supported OS	Win 7 / 10 / Android / Linux / Mac

### ■ OSD Function

OSD Controls	5 buttons
OSD Languages	CN, EN, FR, IT, DE ES, KR, RU, PT

### ■ Mechanical

Product Dimension	575.9 x 347.9x 39.8mm
Packing Dimension	685 x 470 x 155mm (1 PCS) 724 x 492 x 322mm(4 PCS)
Weight(approx.)	7.5kg / 9.5kg/34kg
Wall Mount Method	VESA,MIS-D,100x100/200*100mm, Y,4,90

### ■ Power

Power Supply	DC in: DC 12V, connector: 5.5*2.5
Typical Power	≤ 25W (typ.)
Standby Power	≤ 0.5 W (typ.)

### ■ Environmental

Operating T & H	0 °C ~ 50 °C, 90% RH
Storage T & H	-20 °C ~ 60 °C, 90% RH

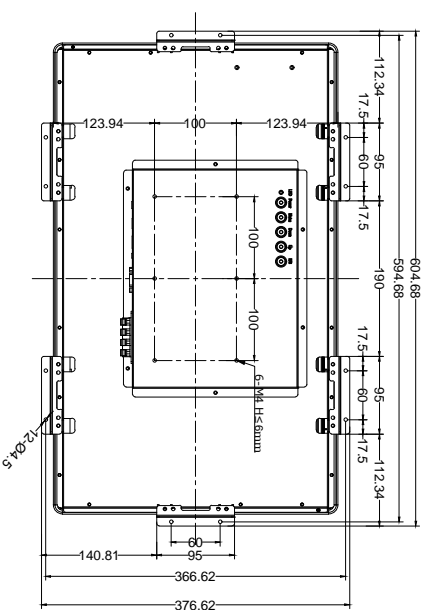
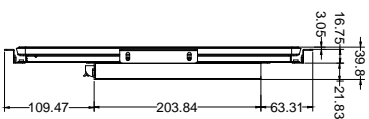
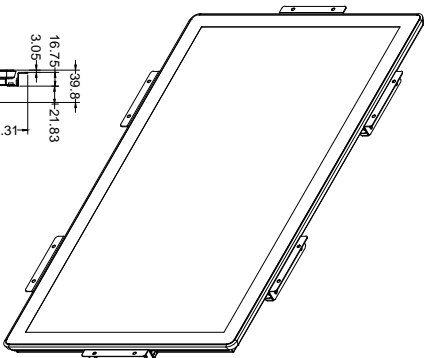
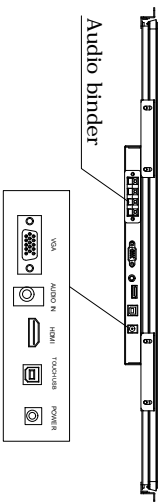
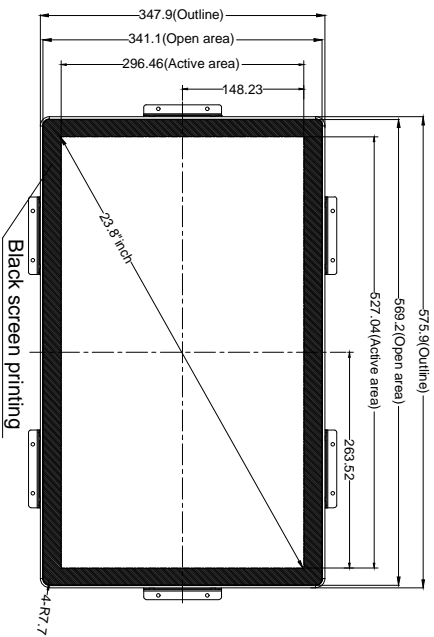
### ■ Accessories

External Speakers	L/R 4 pin red & black amplifier connector
Android Board	RK3188/3368/3288/3399 for optional
Adapter	AC-DC, AC 100~240V 50/60hz DC 12V 3A, 5.5*2.5*10mm

### ■ Other

Ready for Use	24/7
Warranty	1 Year
Regulations	CCC, CE, FCC, CB, RoHS





Dimension Range	Tolerance(mm)
Under 25 mm	0.1
25.1-100 mm	0.2
100.1-250 mm	0.4
250.1-400 mm	0.8
400.1-500 mm	1.5
500.1-630 mm	2.0
630.1-800 mm	2.5

**TOLERANCING**

UNLESS OTHERWISE SPECIFIED ALL DIMS ARE mm

X ±0.2      RADIUS ±0.15

.XX ±0.1      ANGLES ±0.5°

DO NOT SCALE DRAWING

**Title:**

Design:

Date:

Scale: NTS

Sheet:

Ver: 01



Rev	Date	Description	By